



# Energieberater Dipl.-Ing. Ralf Heise e.K.

Consulting engineer for renewable sources of energy

Energy consulting for private and commercial applications  
 Preparation of energy passes, on-site consulting  
 Thermography, preventive maintenance  
 Registered with DENA and BAFA, certified by TÜV  
 Oil mills, separators, pelletizing plants  
 Biomass heating systems, CHP, solar technology

Energieberater Dipl.-Ing. Ralf Heise, Croustillier Nr. 6, 16259 Oderaue

[www.Energieberater-Heise.de](http://www.Energieberater-Heise.de)

## Szarvasi1 – Tall Wheatgrass - NEW WAYS FOR AGRICULTURE -



### Szarvasi1 – Tall Wheatgrass

a long-lived, perennial bunch grass with growth heights of up to 3m. It is tolerant to soil, climate and rainfall, very frost-hardy and therefore suffers hardly any winterkill.

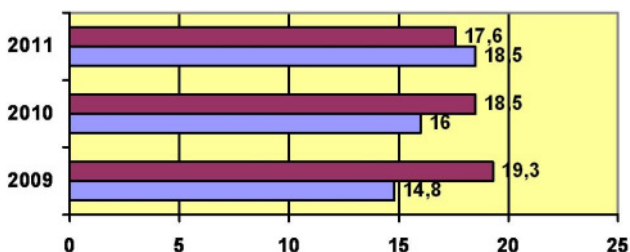
### Benefits of Szarvasi1 – Tall Wheatgrass

- Higher percentage of dry mass and higher gas yield than with corn
- Two harvests per year
- Several years of use
- Protection against erosion of arable land
- No pest management required during the utilization phase
- Minimal nitrogen leaching
- Easy conversion to other crops
- No wilting required for harvesting

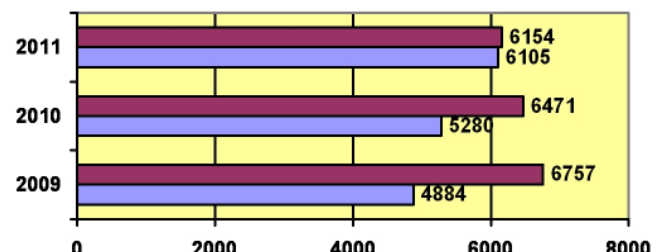
### Results of the "Triesdorf Energy Plant Trial" by Herbert Geißendörfer / Agricultural Educational Center Triesdorf



Trockenmasseertrag 2009-2011 in to/ha



Methanertrag 2009-2011 in m³/ha



Dipl. Ing. Ralf Heise  
 Croustillier Nr. 6  
 16259 Oderaue  
 HRA 2509 Local Court FF/O

Phone: +49 33457 – 29969  
 Fax: +49 33457 – 5893  
 Mobile: +49 174 – 7127084  
 e-mail: [info@energieberater-heise.de](mailto:info@energieberater-heise.de)

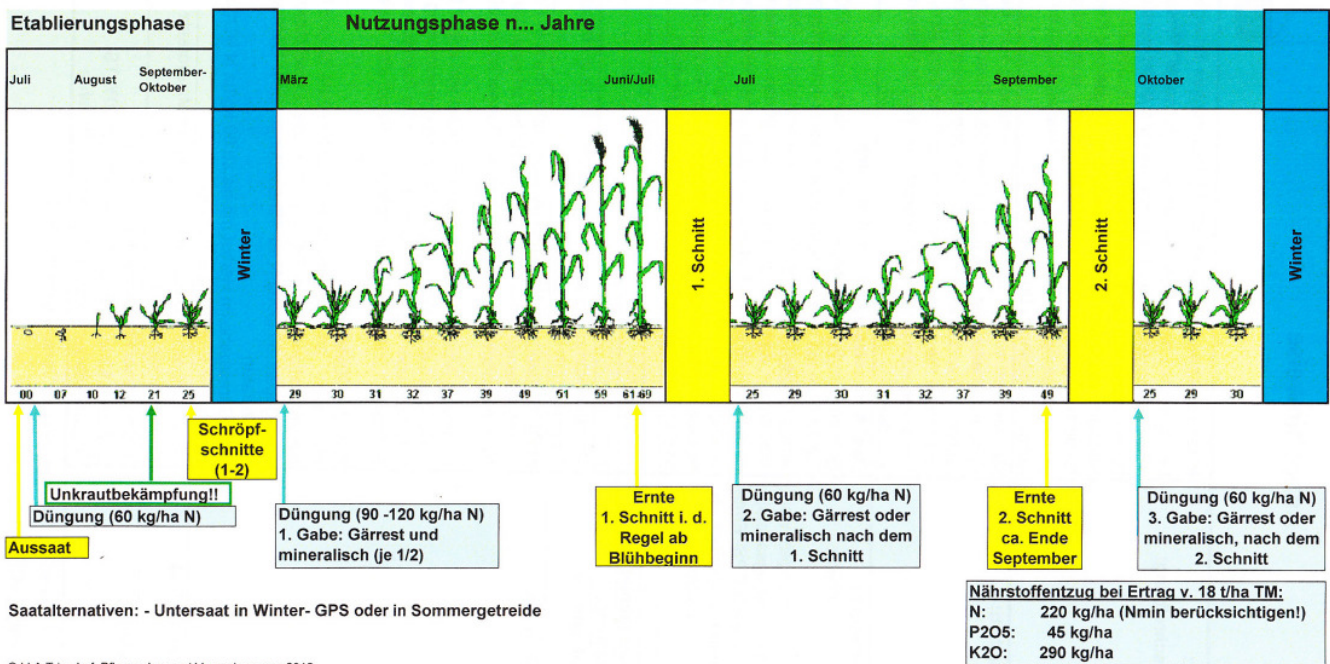
Bank account: Sparkasse Märkisch Oderland  
 Acc. no.: 3000520022  
 Sort code: 170 540 40  
 VAT ID no.: DE248360023

# Szarvasi1 – Tall Wheatgrass

## - NEW WAYS FOR AGRICULTURE -



### Anbauschema, Riesenweizengras Stand 2012 (vorläufig)



Harvesting takes place in early summer, mid to late June, and in fall, mid to late September, at full panicle with about 28-32% dry mass. Harvest with a whole crop silage cutter or a row-independent corn head; direct chopping is possible; keep a cutting height of 10 to 15cm.

**Seed time: early spring after late frosts, better in late summer.**